

# CORONAVIRUS

## 2019-nCoV

### Graphics Information

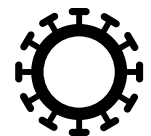
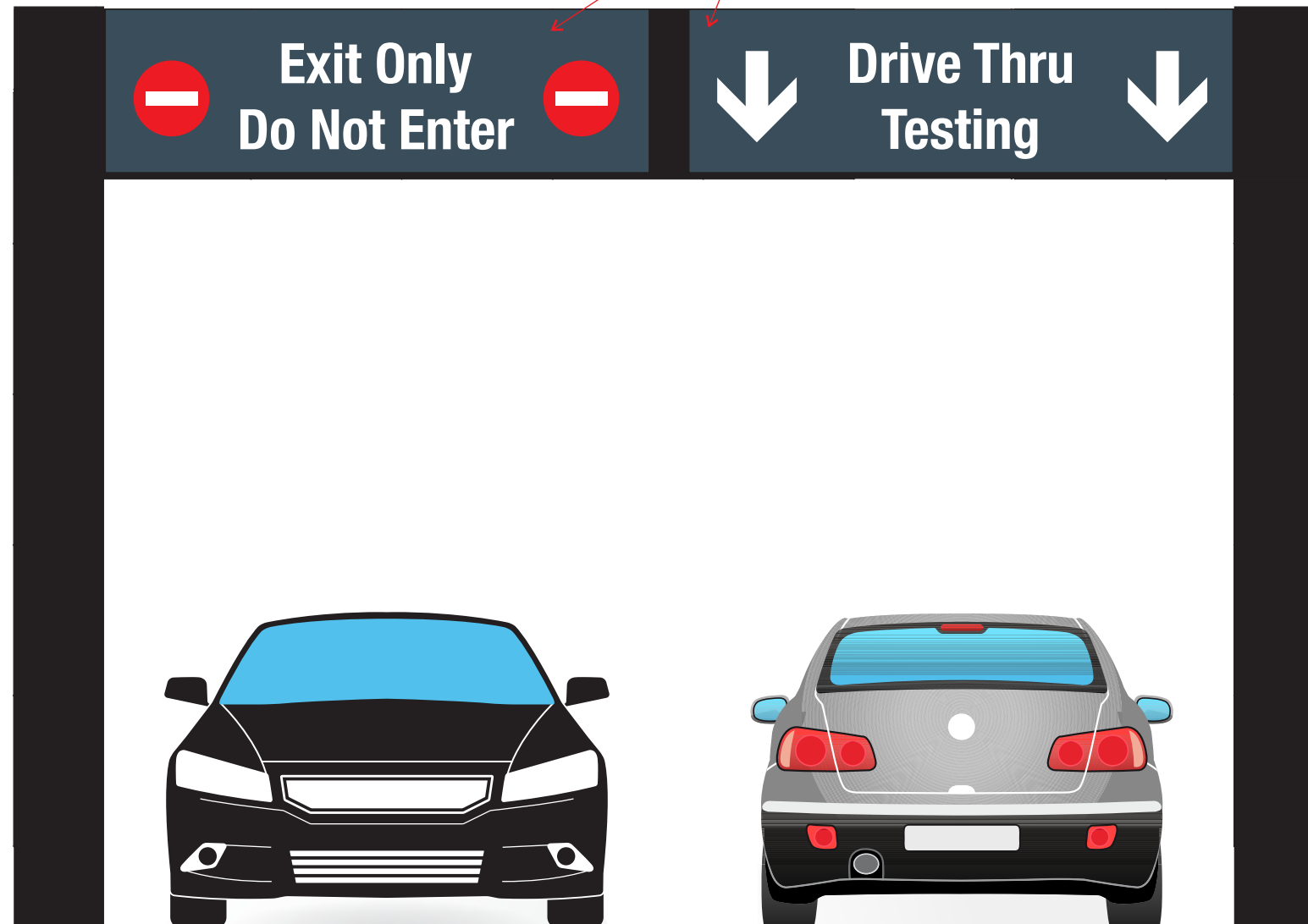
- Symptoms
- Prevention
- Care

**INNERFACE.**  
ARCHITECTURAL  
SIGNAGE, INC.

**DIRECTING PEOPLE BY DESIGN**

5849 PEACHTREE ROAD  
ATLANTA, GEORGIA 30341  
T 770 921 5566  
TF 800 445 4796  
F 770 279 1327  
INNERFACESIGN.COM

24" x 84" Aluminum panels  
w/ applied reflective vinyl



**CORONAVIRUS**  
2019-nCoV

**INNERFACE**  
ARCHITECTURAL  
SIGNAGE, INC.

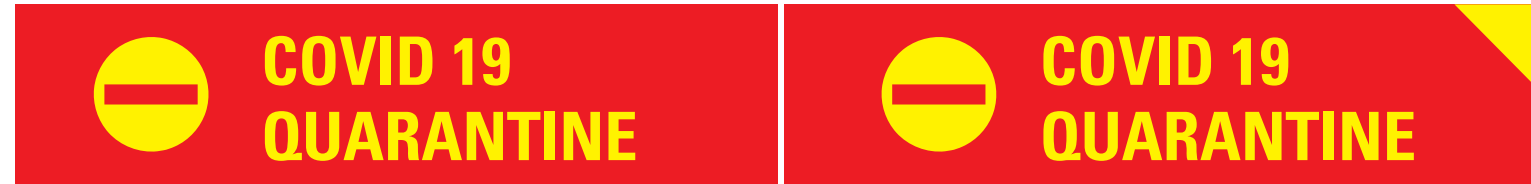
5849 Peachtree Road | Atlanta, GA 30349  
1.800-445-4796 | innerfacesign.com

v0: 03.11.20 MB  
v1: 03.20.20 MB

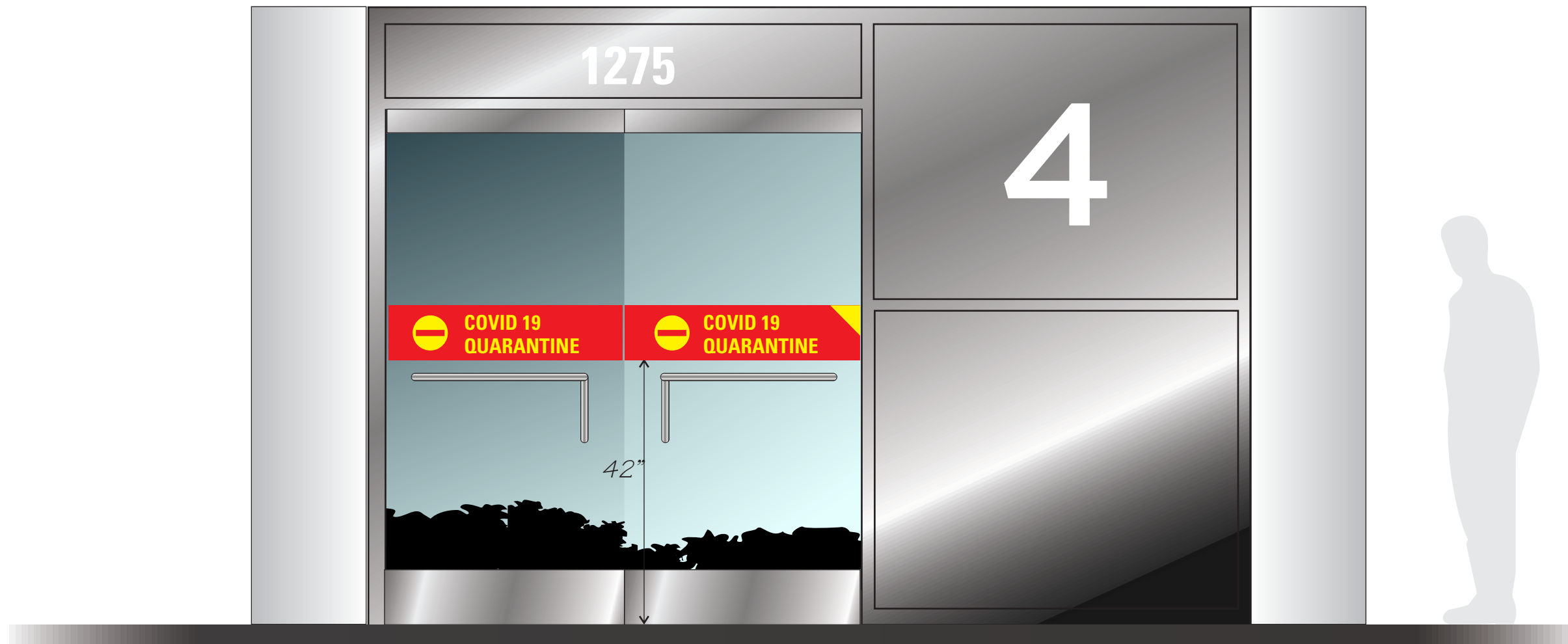
This drawing and the ideas expressed remain the confidential property of INNERFACE. This drawing and its ideas are not to be reproduced, copied or disclosed to any other person or entity without the express written consent of a representative of INNERFACE.

Project Title:  
Corona Virus  
Graphics  
Designer: M. Brown



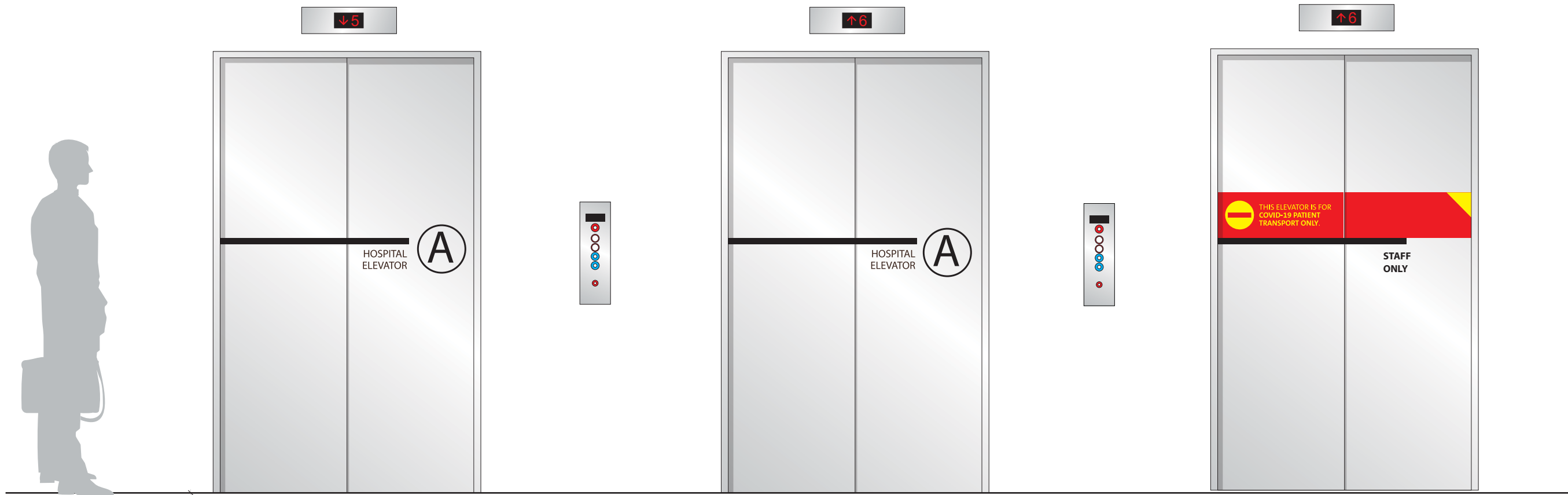


8" x 30"  
Digitally printed Vinyl





8" x 30"  
Digitally printed Vinyl



Context Elevation  
SCALE: Not to scale

## SYMPTOMS



FEVER



COUGH



SHORTNESS  
OF BREATH



SORE THROAT

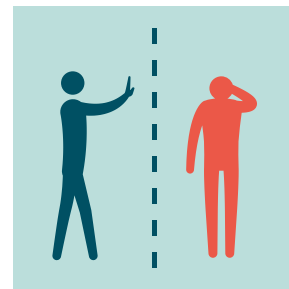


HEADACHE

## PREVENTION



WASH HANDS WITH  
WATER AND  
SOAP/SANITIZER,  
AT LEAST 20 SECONDS



AVOID CONTACT  
WITH SICK PEOPLE



DON'T TOUCH EYES,  
NOSE OR MOUTH WITH  
UNWASHED HANDS



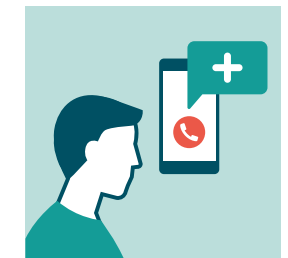
WEAR A MASK



AVOID  
CROWDED PLACES



AVOID TRAVELLING TO  
AFFECTED AREAS  
UNLESS NECESSARY

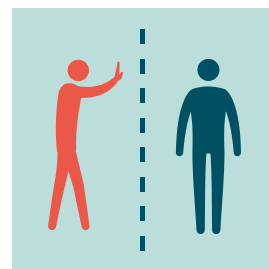


IF YOU BECOME SICK  
SEEK MEDICAL CARE  
IMMEDIATELY

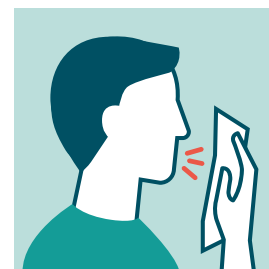
## IF YOU ARE INFECTED



STAY AT HOME



AVOID CONTACT  
WITH OTHERS



COVER YOUR NOSE  
AND MOUTH WITH  
TISSUE OR ELBOW  
WHEN SNEEZING



PUT TISSUES  
IN THE TRASH BIN  
AND WASH HANDS



KEEP OBJECTS AND  
SURFACES CLEAN

# SYMPTOMS



FEVER



COUGH



SHORTNESS  
OF BREATH

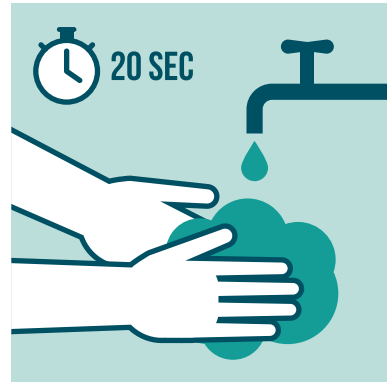


SORE THROAT

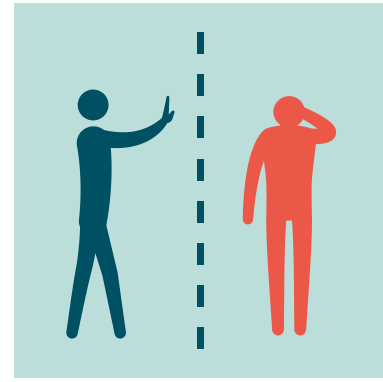


HEADACHE

# PREVENTION



WASH HANDS WITH  
WATER AND  
SOAP/SANITIZER,  
AT LEAST 20 SECONDS



AVOID CONTACT  
WITH SICK PEOPLE



DON'T TOUCH EYES,  
NOSE OR MOUTH WITH  
UNWASHED HANDS



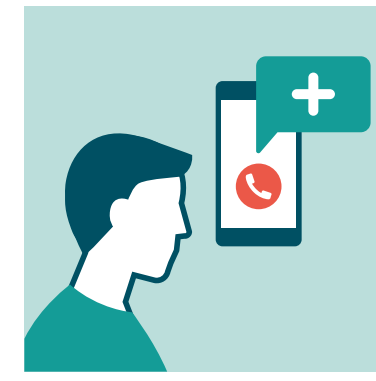
WEAR A MASK



AVOID  
CROWDED PLACES

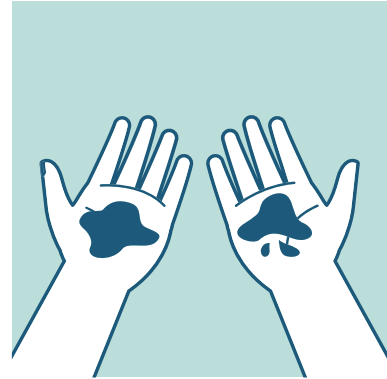


AVOID TRAVELLING TO  
AFFECTED AREAS  
UNLESS NECESSARY



IF YOU BECOME SICK  
SEEK MEDICAL CARE  
IMMEDIATELY

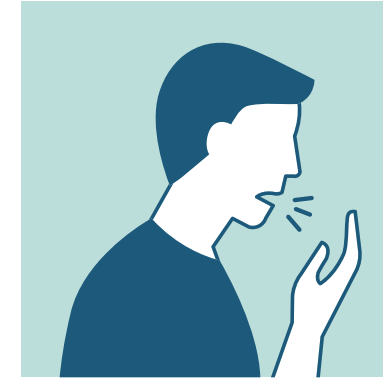
# PREVENTION: WHEN TO WASH HANDS



WHEN THEY LOOK DIRTY



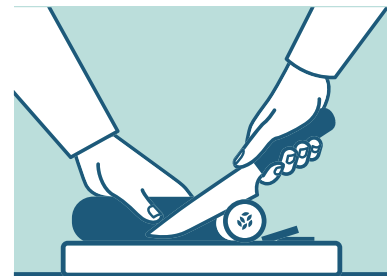
AFTER ARRIVING  
AT HOME



AFTER COUGHING,  
SNEEZING,  
BLOWING NOSE



AFTER GOING  
TO THE TOILET



BEFORE AND AFTER  
PREPARING FOOD



BEFORE AND AFTER  
EATING FOOD



AFTER BEING IN CONTACT  
WITH ANIMALS, ANIMAL  
FEED AND ANIMAL WASTE



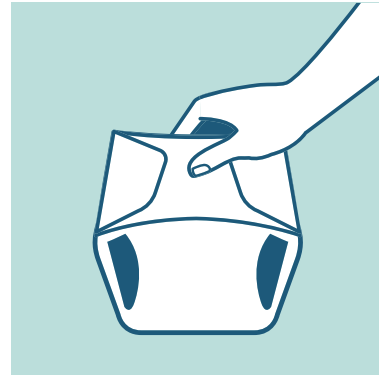
AFTER TOUCHING WASTE



# PREVENTION: WHEN TO WASH HANDS



WHEN TAKING CARE  
OF SICK PEOPLE



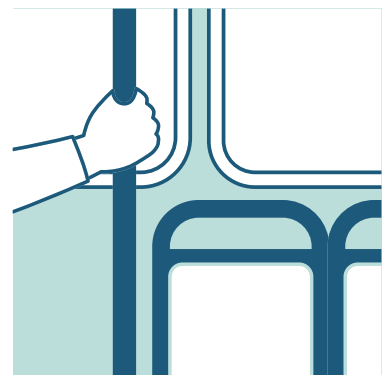
AFTER CHANGING DIAPERS  
OR CLEANING UP A CHILD



BEFORE AND AFTER  
TREATING WOUNDS



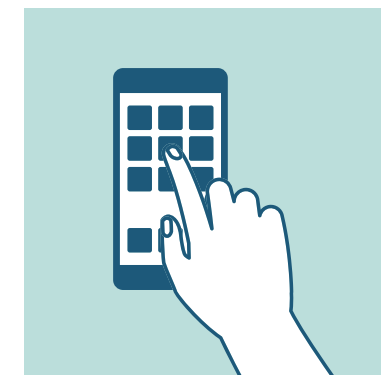
BEFORE INSERTING  
OR REMOVING  
CONTACT LENSES



WHEN USING PUBLIC  
TRANSPORTATION



AT THE HOSPITAL AND  
AT THE DOCTOR'S OFFICE



WHEN USING  
TOUCH SCREENS

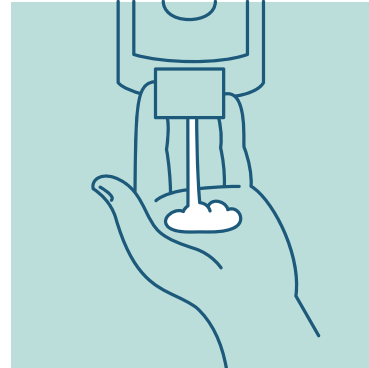


WHEN USING POTENTIALLY  
CONTAMINATED OBJECTS  
IN PUBLIC SPACES

# PREVENTION: HOW TO WASH HANDS



WET YOUR HANDS



APPLY SOAP



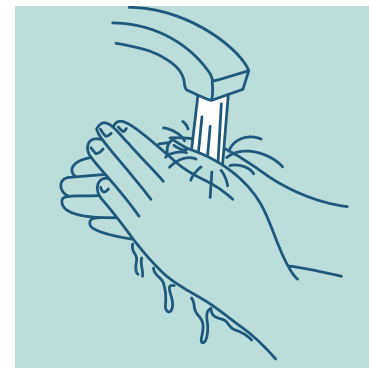
LATHER PALMS



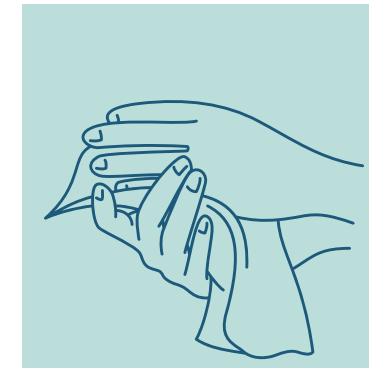
BETWEEN FINGERS



SCRUB UNDER NAILS



RINSE THOROUGHLY



DRY THOROUGHLY

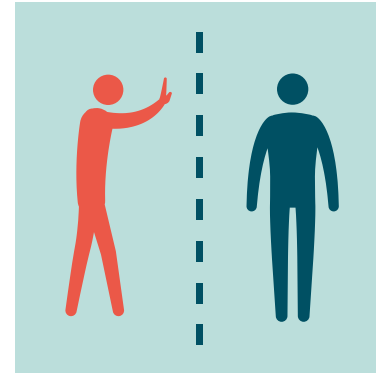


USE TOWEL

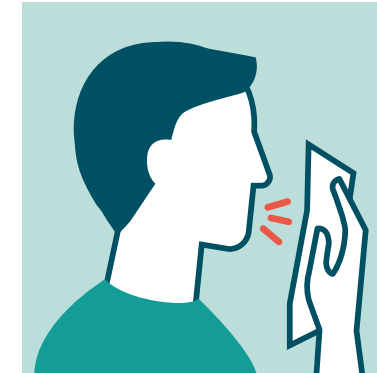
# IF YOU ARE INFECTED



STAY AT HOME



AVOID CONTACT  
WITH OTHERS



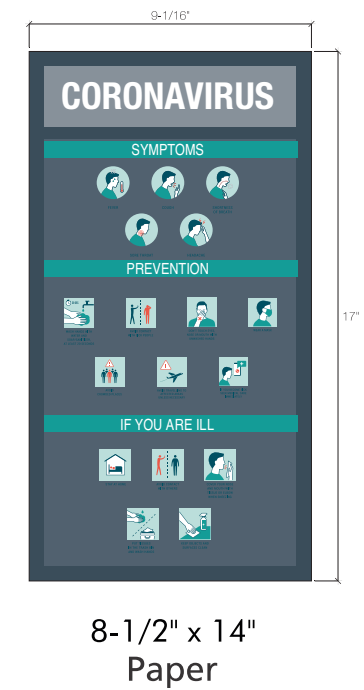
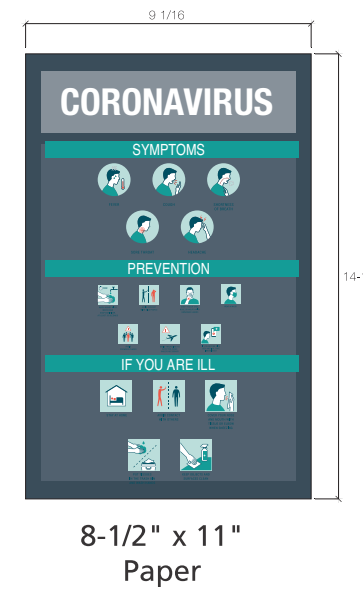
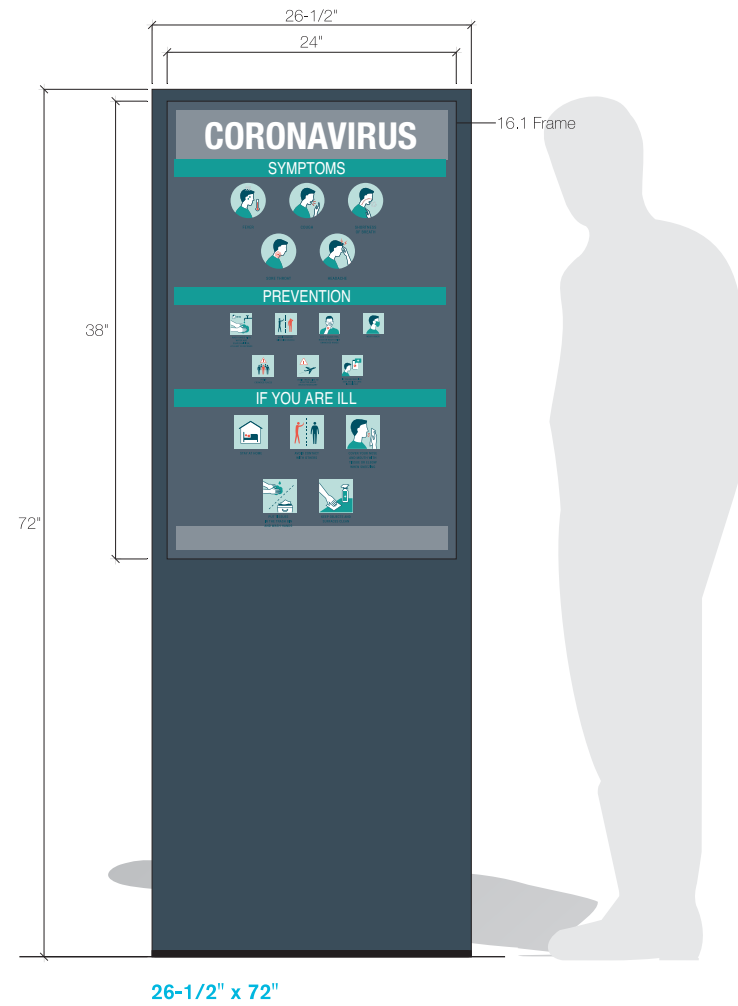
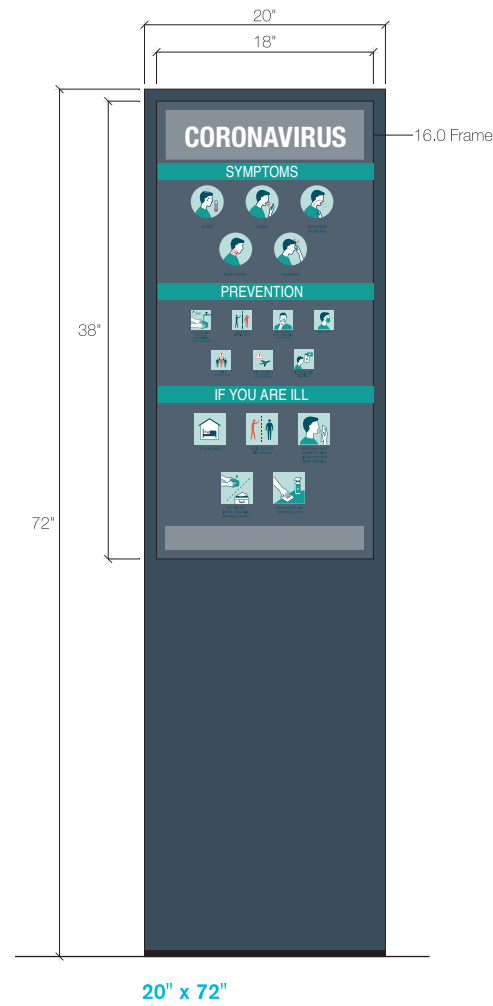
COVER YOUR NOSE  
AND MOUTH WITH  
TISSUE OR ELBOW  
WHEN SNEEZING

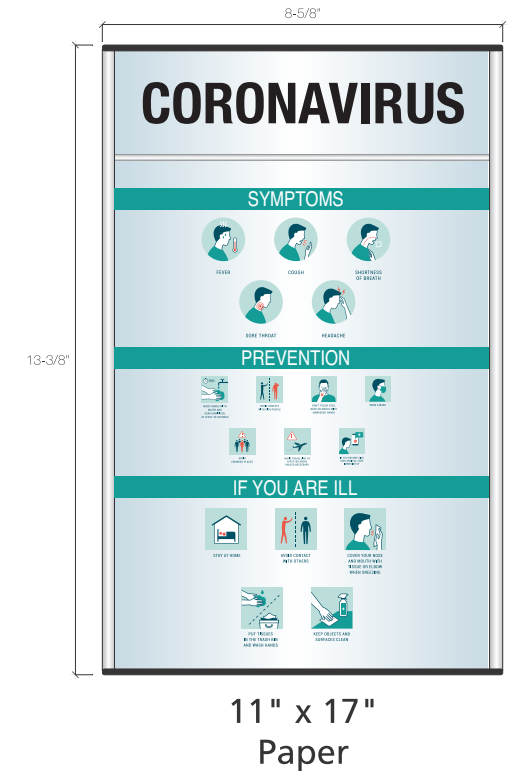
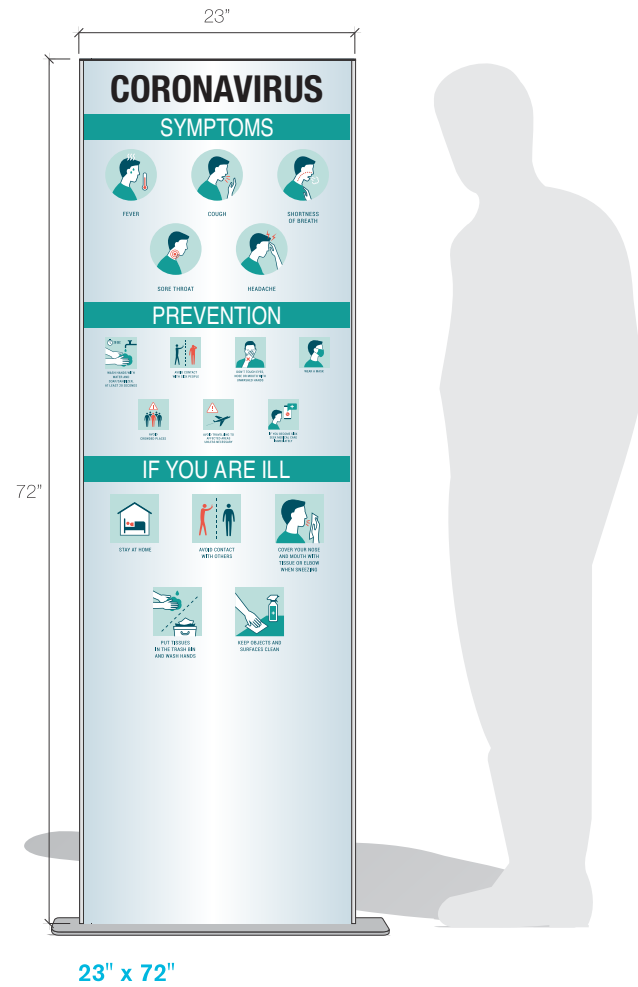
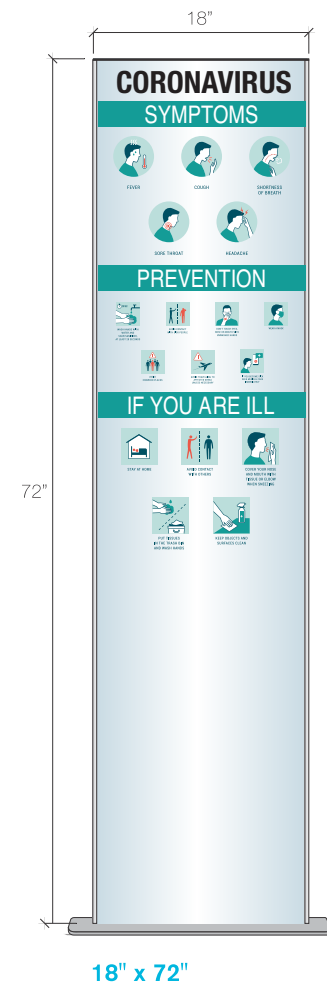


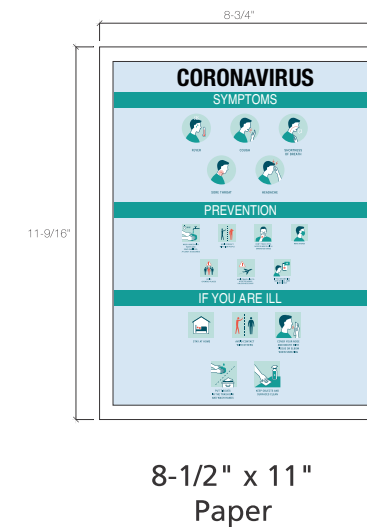
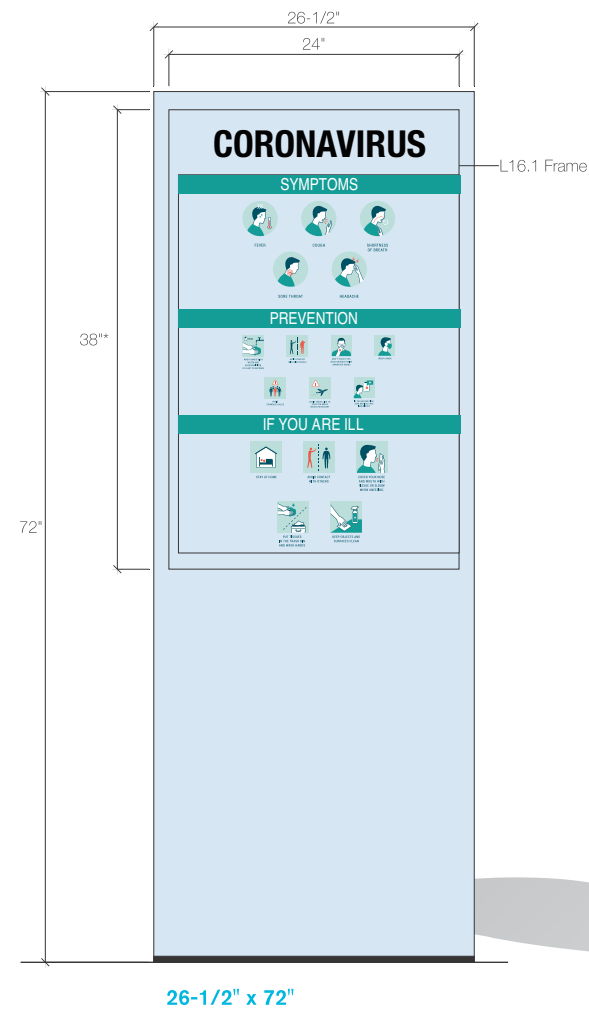
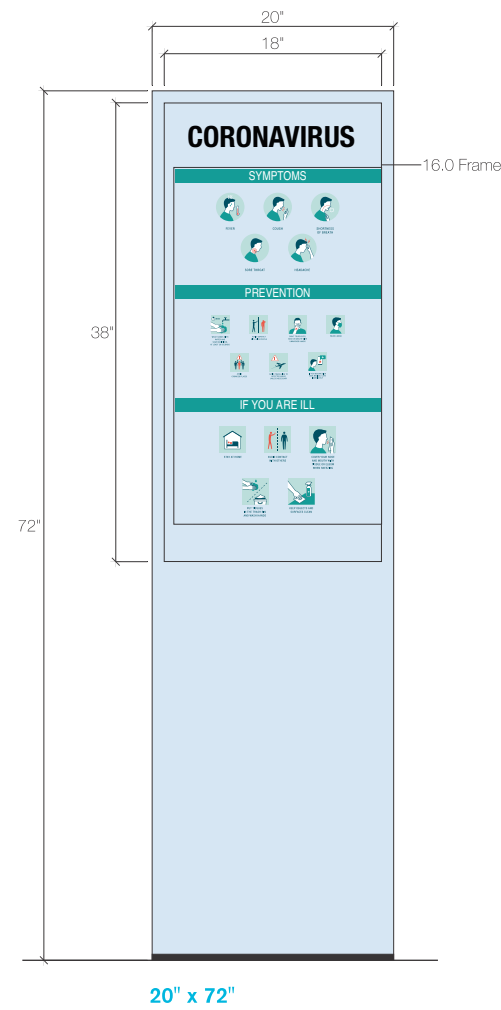
PUT TISSUES  
IN THE TRASH BIN  
AND WASH HANDS

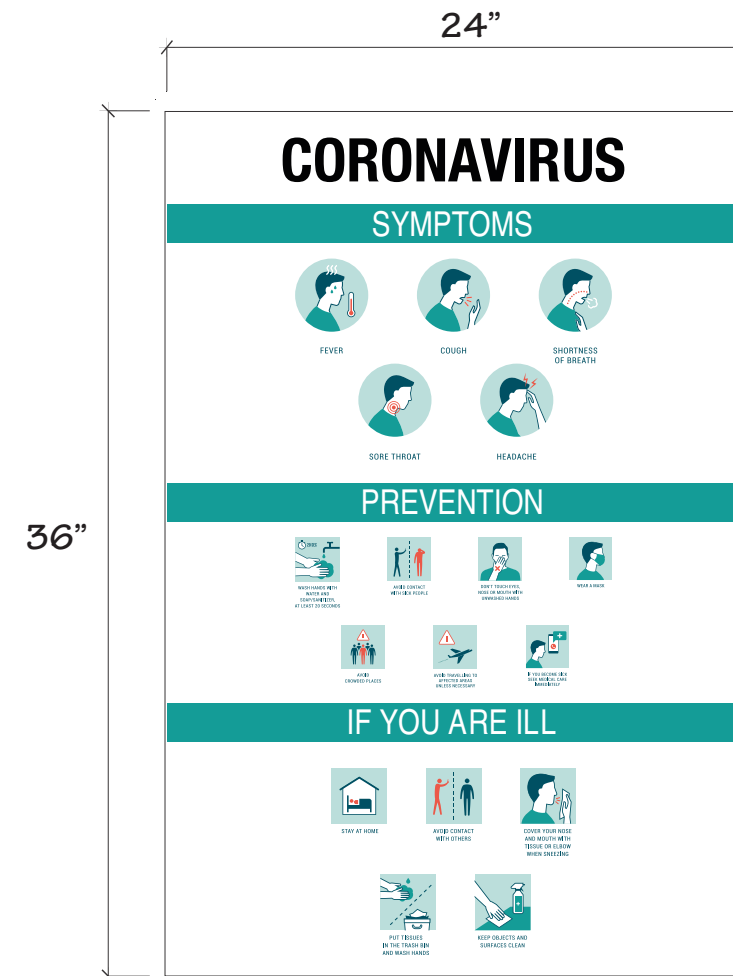
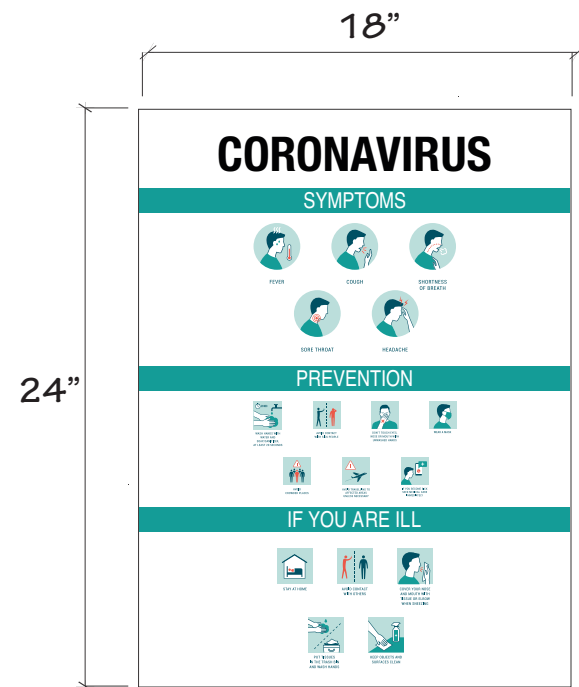


KEEP OBJECTS AND  
SURFACES CLEAN

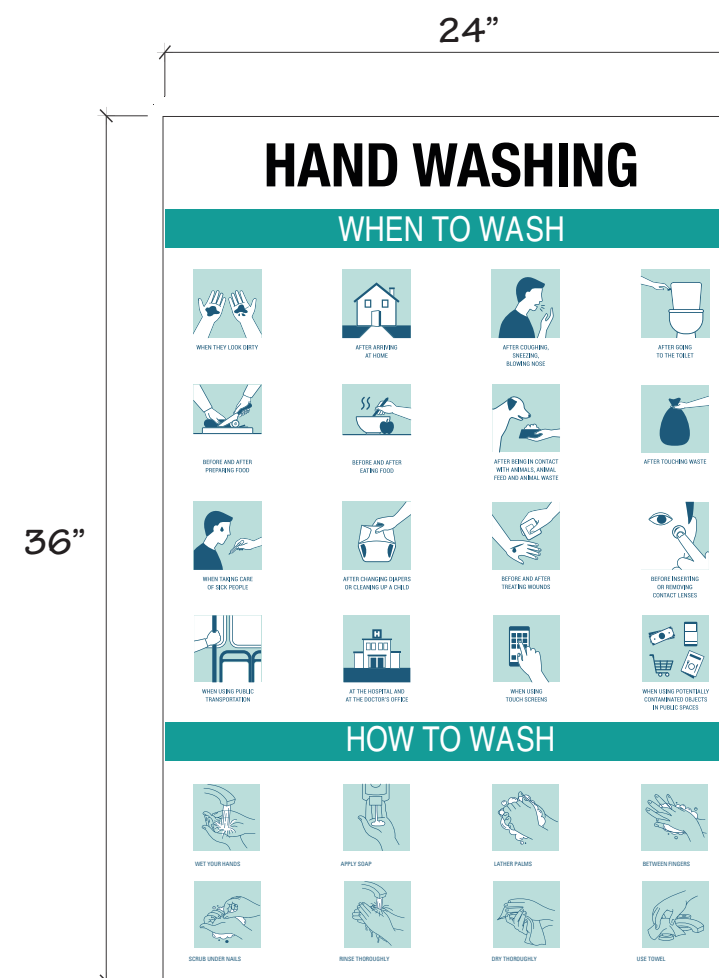
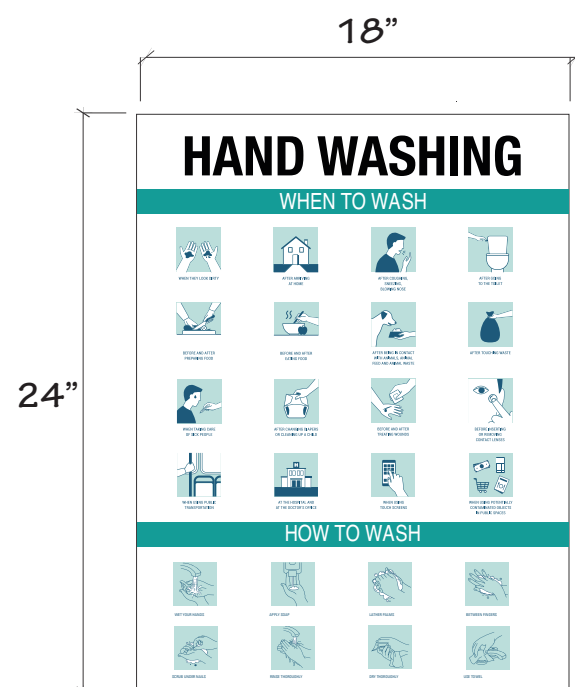








- Digital Print on PVC
- Digital Print on Foamcore



- Digital Print on PVC
- Digital Print on Foamcore