

CORONAVIRUS

2019-nCoV

Graphics Information

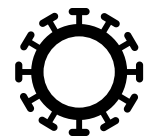
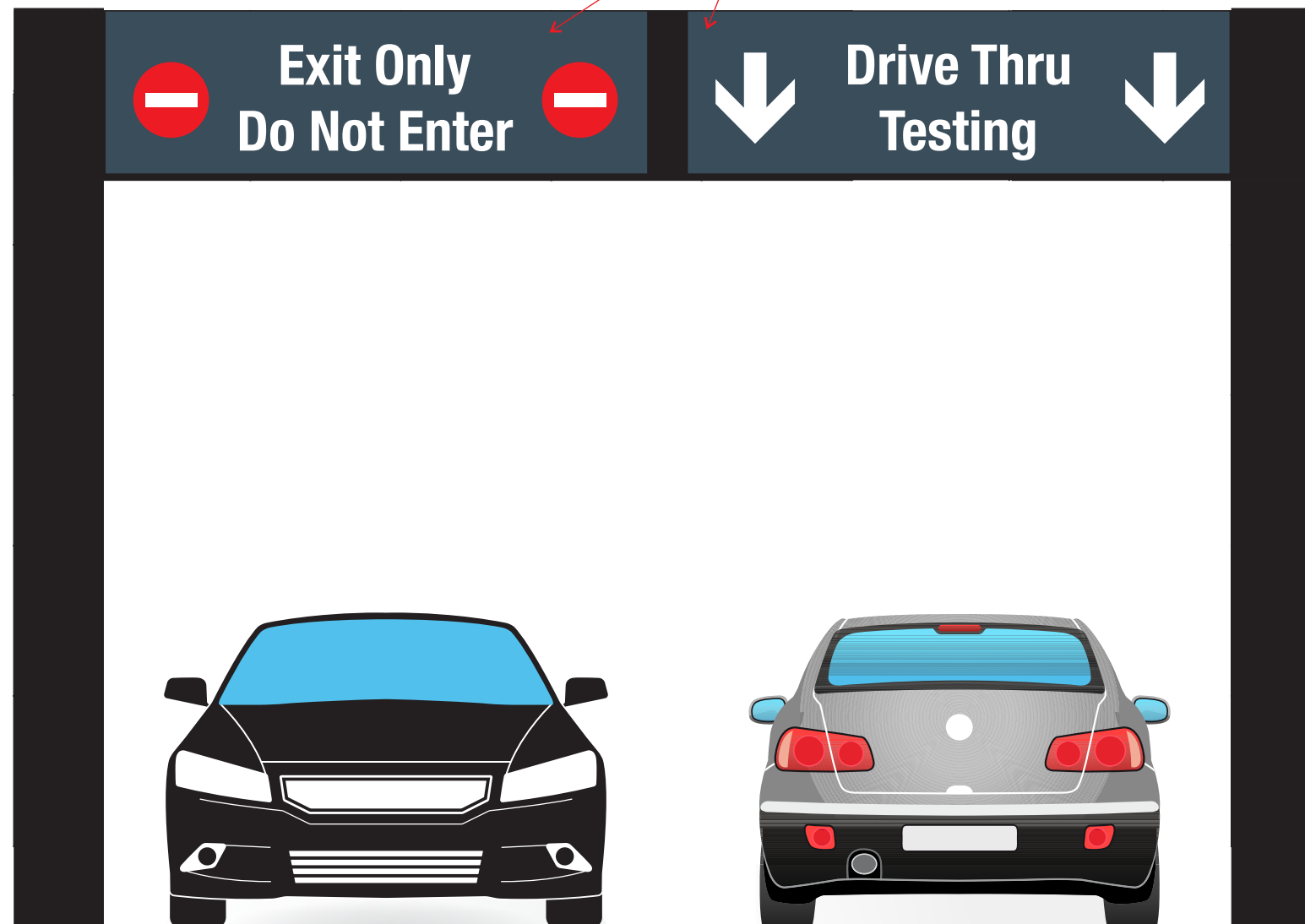
- Symptoms
- Prevention
- Care

INNERFACE.
ARCHITECTURAL
SIGNAGE, INC.

DIRECTING PEOPLE BY DESIGN

5849 PEACHTREE ROAD
ATLANTA, GEORGIA 30341
T 770 921 5566
TF 800 445 4796
F 770 279 1327
INNERFACESIGN.COM

24" x 84" Aluminum panels
w/ applied reflective vinyl



CORONAVIRUS
2019-nCoV

INNERFACE
ARCHITECTURAL
SIGNAGE, INC.

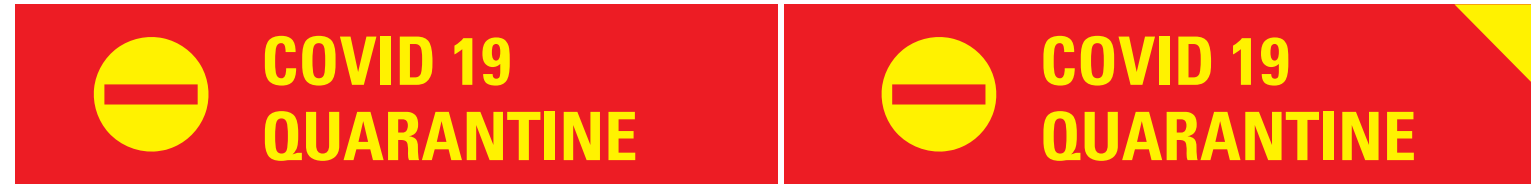
5849 Peachtree Road | Atlanta, GA 30349
1.800-445-4796 | innerfacesign.com

v0: 03.11.20 MB
v1: 03.20.20 MB

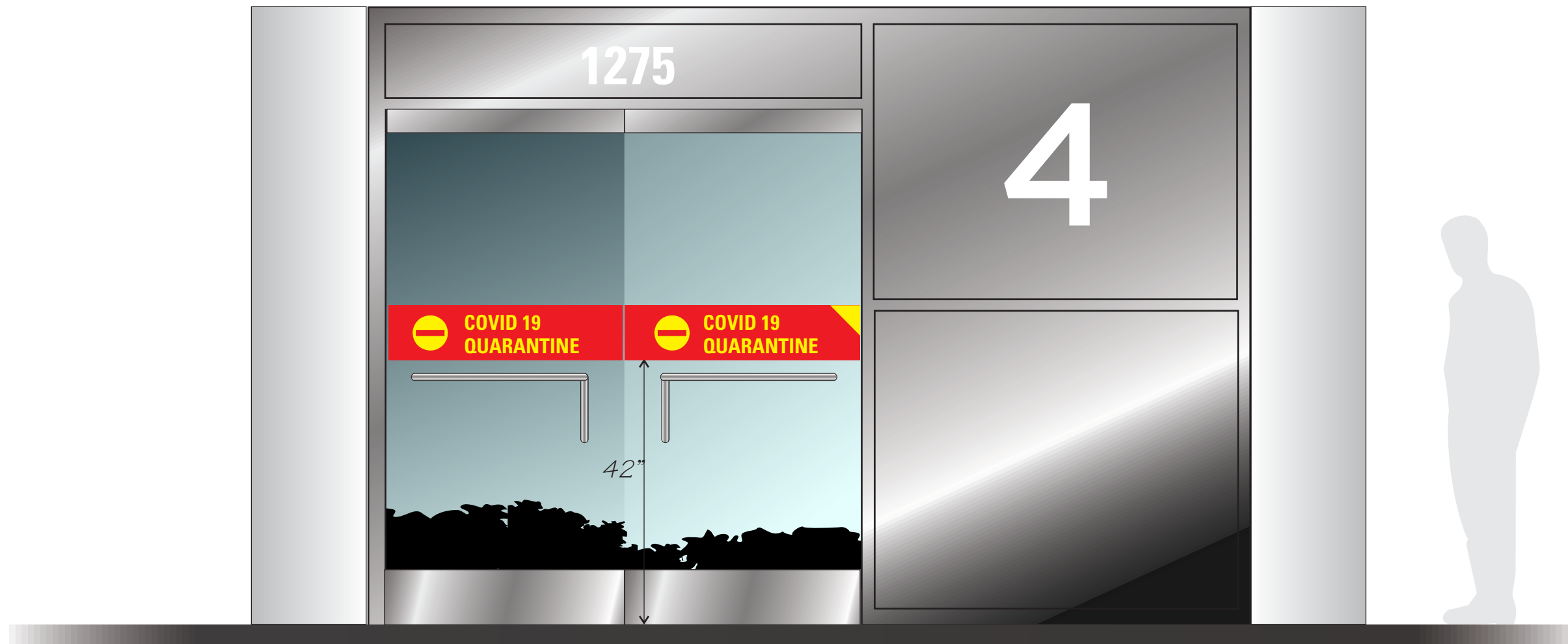
This drawing and the ideas expressed remain the confidential property of INNERFACE. This drawing and its ideas are not to be reproduced, copied or disclosed to any other person or entity without the express written consent of a representative of INNERFACE.

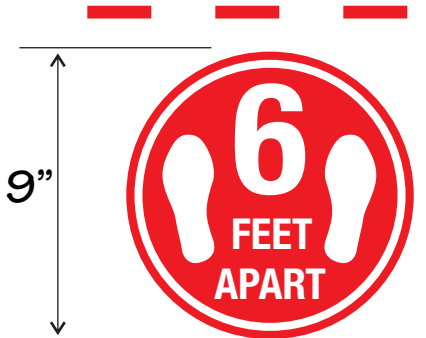
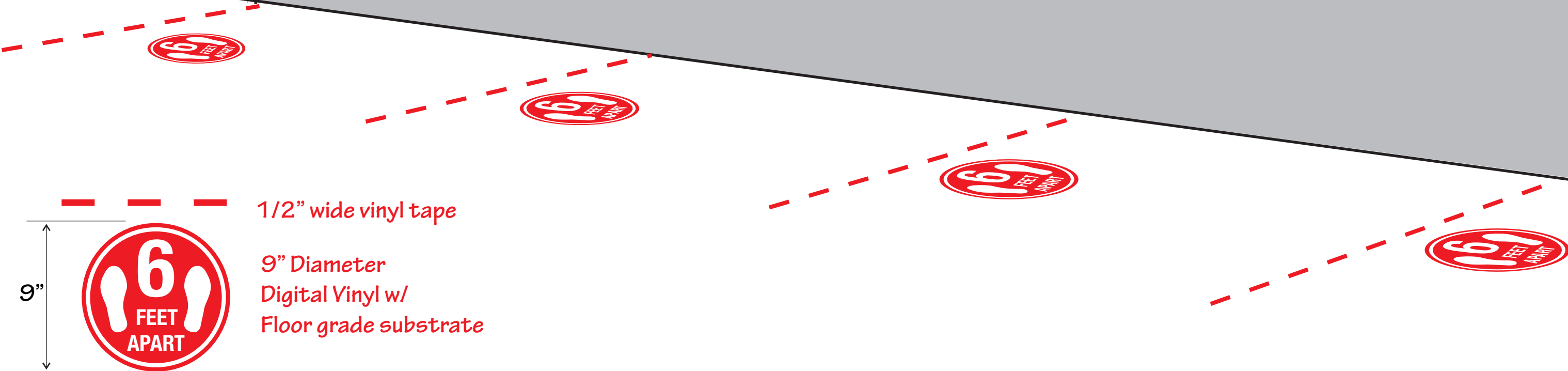
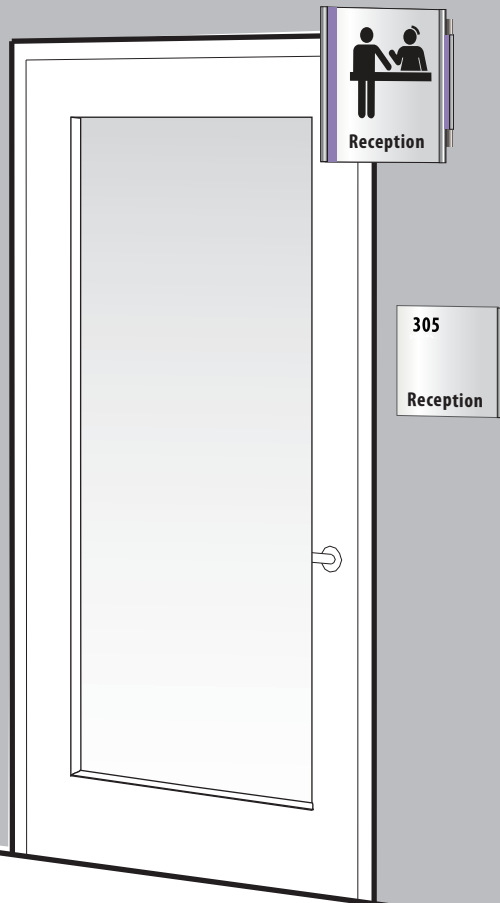
Project Title:
Corona Virus
Graphics
Designer: M. Brown





8" x 30"
Digitally printed Vinyl

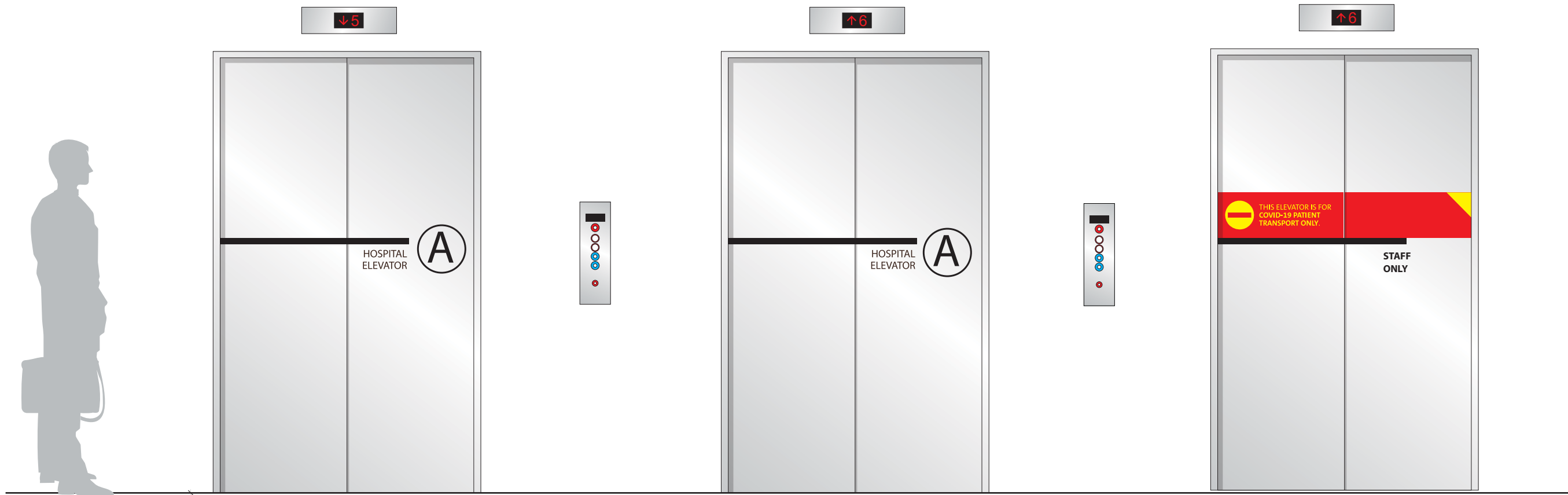




1/2" wide vinyl tape
9" Diameter
Digital Vinyl w/
Floor grade substrate



8" x 30"
Digitally printed Vinyl



Context Elevation
SCALE: Not to scale

SYMPTOMS



FEVER



COUGH



SHORTNESS
OF BREATH



SORE THROAT

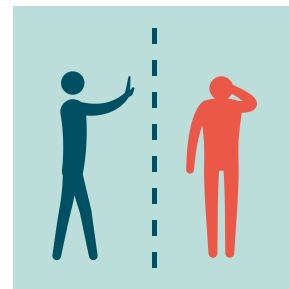


HEADACHE

PREVENTION



WASH HANDS WITH
WATER AND
SOAP/SANITIZER,
AT LEAST 20 SECONDS



AVOID CONTACT
WITH SICK PEOPLE



DON'T TOUCH EYES,
NOSE OR MOUTH WITH
UNWASHED HANDS



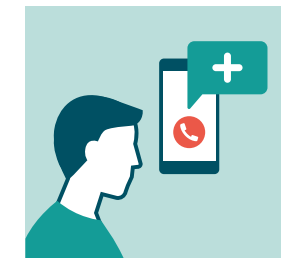
WEAR A MASK



AVOID
CROWDED PLACES



AVOID TRAVELLING TO
AFFECTED AREAS
UNLESS NECESSARY

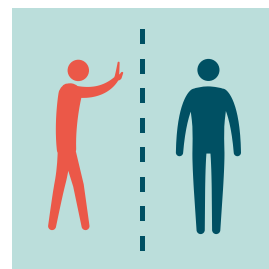


IF YOU BECOME SICK
SEEK MEDICAL CARE
IMMEDIATELY

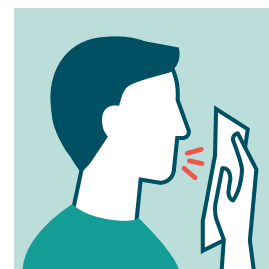
IF YOU ARE INFECTED



STAY AT HOME



AVOID CONTACT
WITH OTHERS



COVER YOUR NOSE
AND MOUTH WITH
TISSUE OR ELBOW
WHEN SNEEZING



PUT TISSUES
IN THE TRASH BIN
AND WASH HANDS



KEEP OBJECTS AND
SURFACES CLEAN

SYMPTOMS



FEVER



COUGH



SHORTNESS
OF BREATH



SORE THROAT

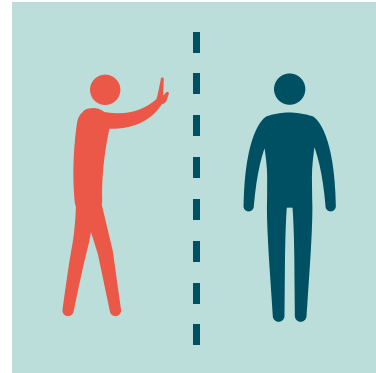


HEADACHE

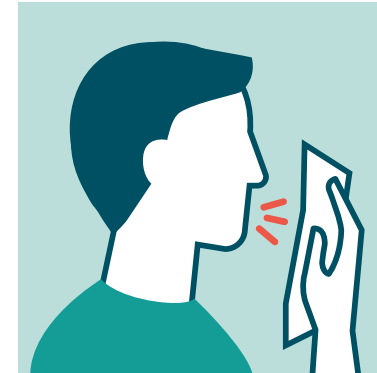
IF YOU ARE INFECTED



STAY AT HOME



AVOID CONTACT
WITH OTHERS



COVER YOUR NOSE
AND MOUTH WITH
TISSUE OR ELBOW
WHEN SNEEZING



PUT TISSUES
IN THE TRASH BIN
AND WASH HANDS

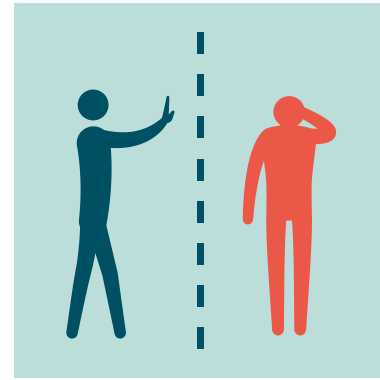


KEEP OBJECTS AND
SURFACES CLEAN

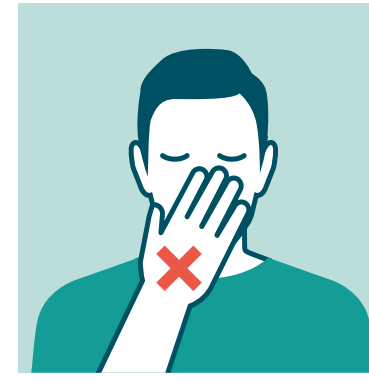
PREVENTION



WASH HANDS WITH
WATER AND
SOAP/SANITIZER,
AT LEAST 20 SECONDS



AVOID CONTACT
WITH SICK PEOPLE



DON'T TOUCH EYES,
NOSE OR MOUTH WITH
UNWASHED HANDS



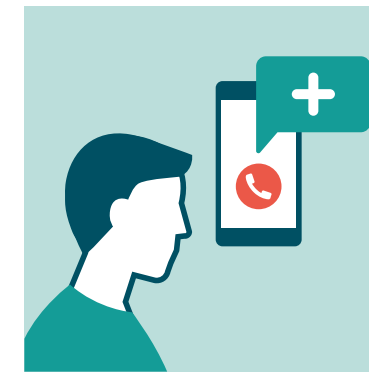
WEAR A MASK



AVOID
CROWDED PLACES

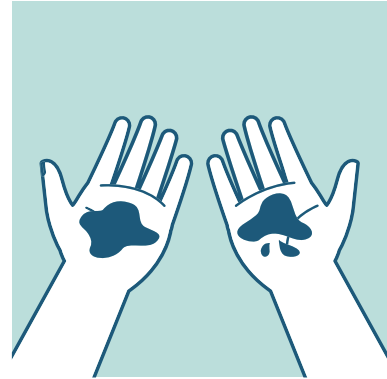


AVOID TRAVELLING TO
AFFECTED AREAS
UNLESS NECESSARY



IF YOU BECOME SICK
SEEK MEDICAL CARE
IMMEDIATELY

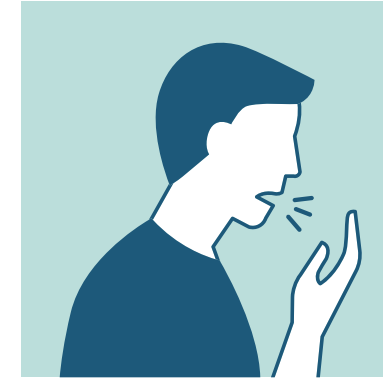
PREVENTION: WHEN TO WASH HANDS



WHEN THEY LOOK DIRTY



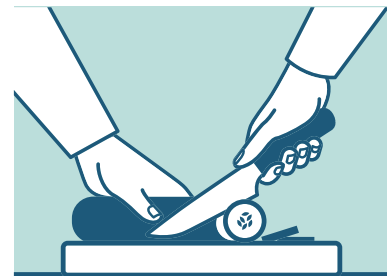
AFTER ARRIVING
AT HOME



AFTER COUGHING,
SNEEZING,
BLOWING NOSE



AFTER GOING
TO THE TOILET



BEFORE AND AFTER
PREPARING FOOD



BEFORE AND AFTER
EATING FOOD



AFTER BEING IN CONTACT
WITH ANIMALS, ANIMAL
FEED AND ANIMAL WASTE

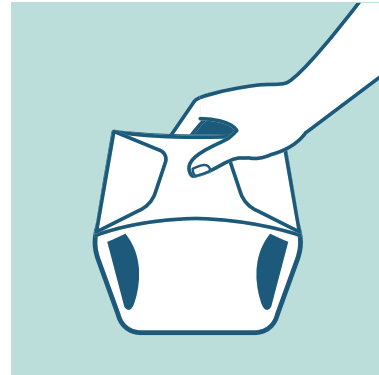


AFTER TOUCHING WASTE

PREVENTION: WHEN TO WASH HANDS



WHEN TAKING CARE
OF SICK PEOPLE



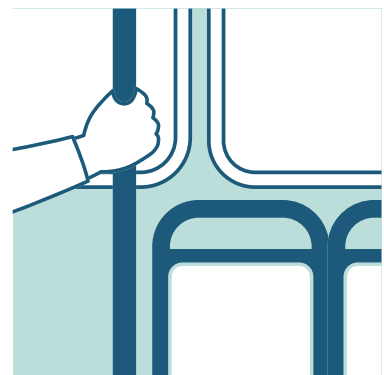
AFTER CHANGING DIAPERS
OR CLEANING UP A CHILD



BEFORE AND AFTER
TREATING WOUNDS



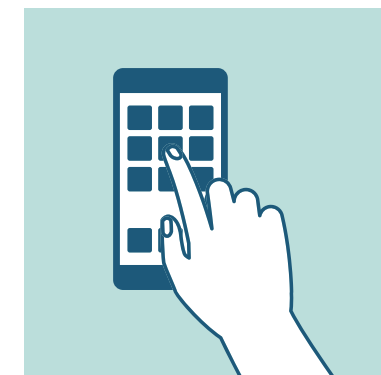
BEFORE INSERTING
OR REMOVING
CONTACT LENSES



WHEN USING PUBLIC
TRANSPORTATION



AT THE HOSPITAL AND
AT THE DOCTOR'S OFFICE

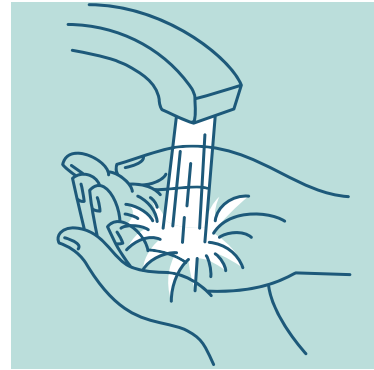


WHEN USING
TOUCH SCREENS

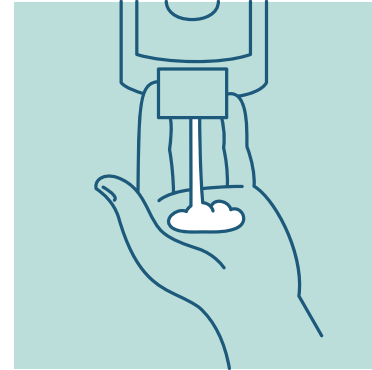


WHEN USING POTENTIALLY
CONTAMINATED OBJECTS
IN PUBLIC SPACES

PREVENTION: HOW TO WASH HANDS



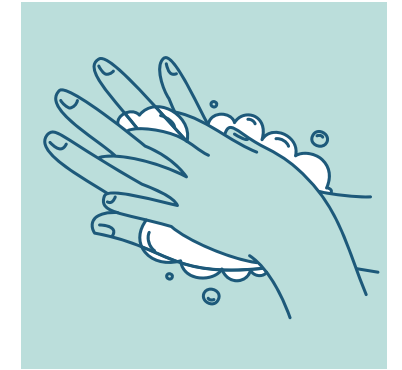
WET YOUR HANDS



APPLY SOAP



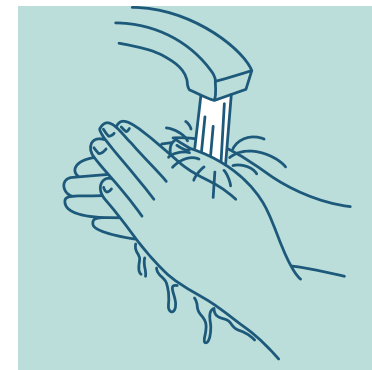
LATHER PALMS



BETWEEN FINGERS



SCRUB UNDER NAILS



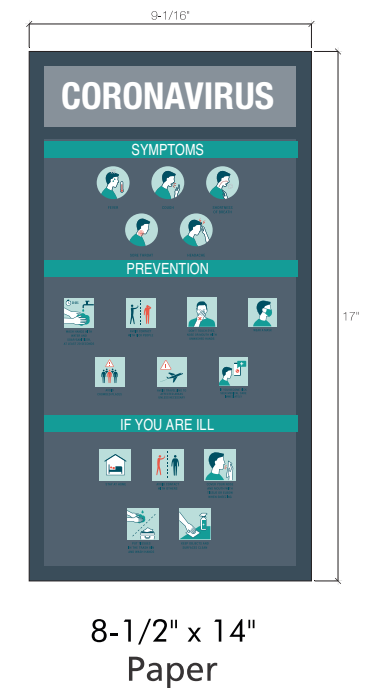
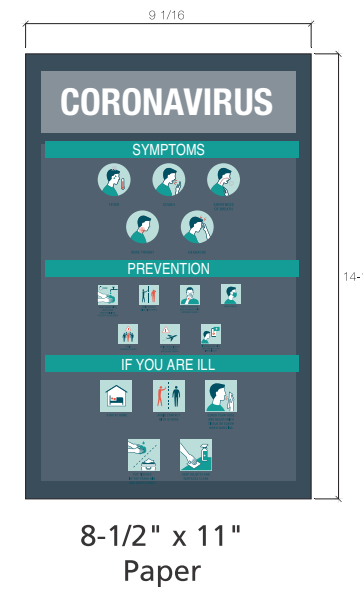
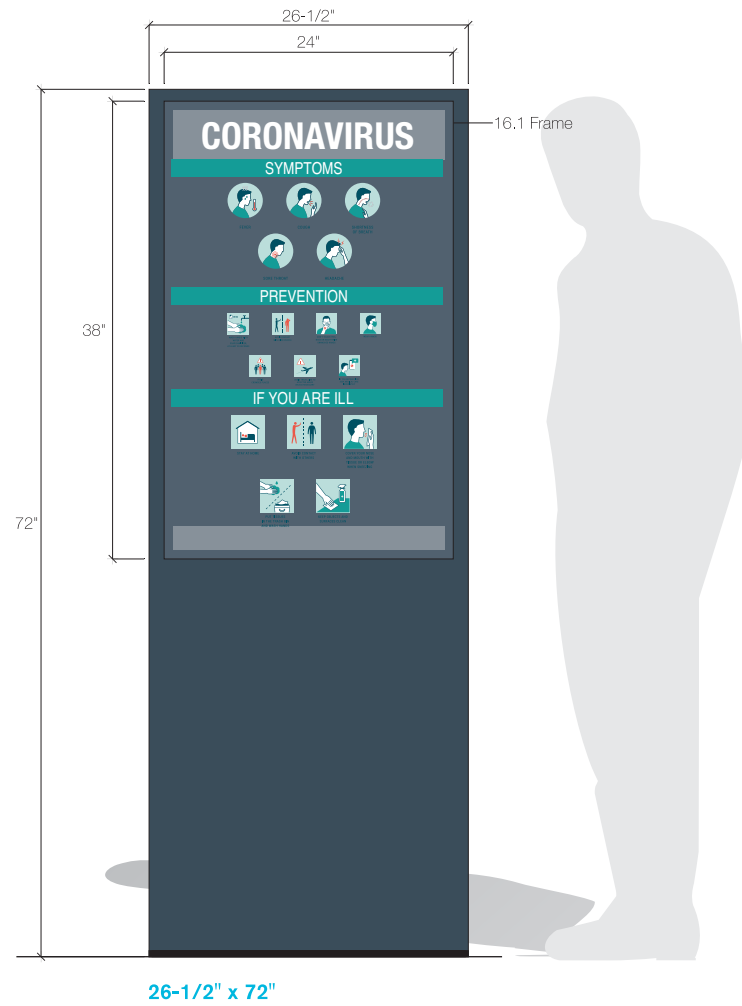
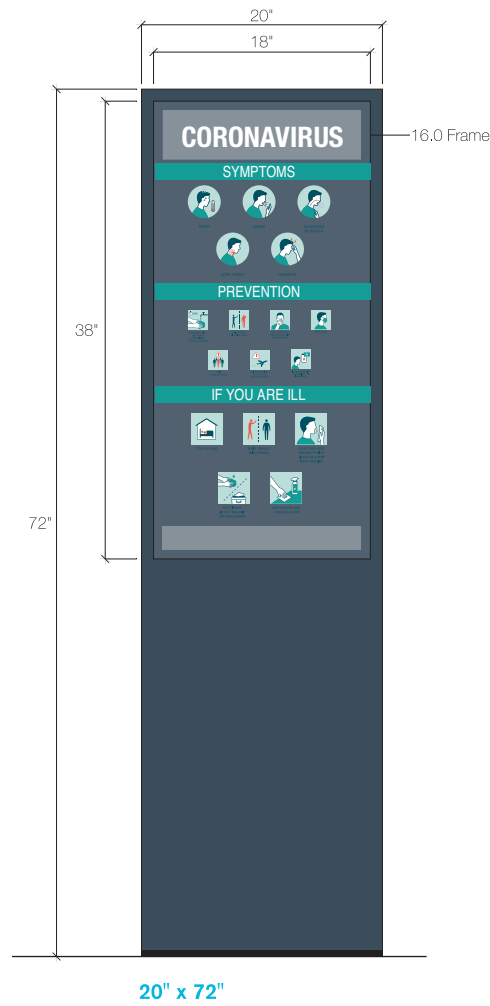
RINSE THOROUGHLY

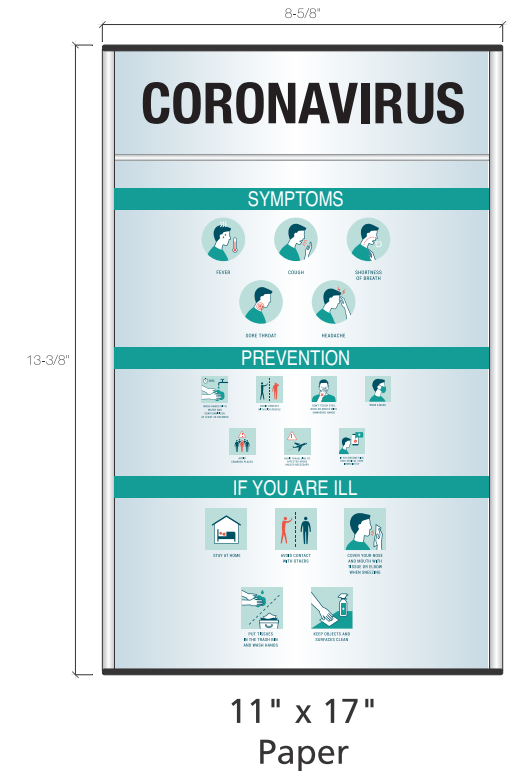
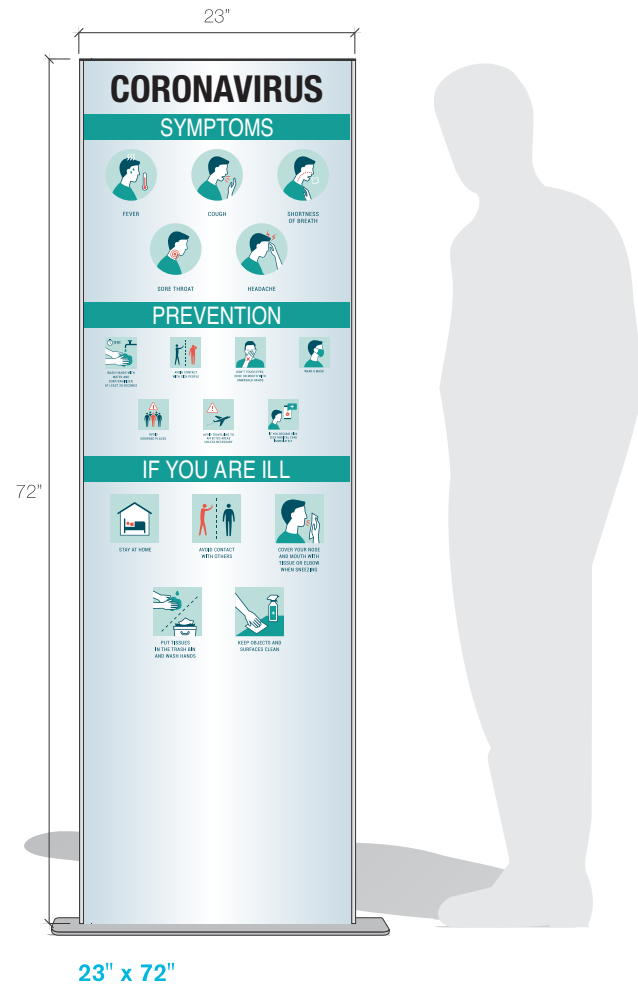
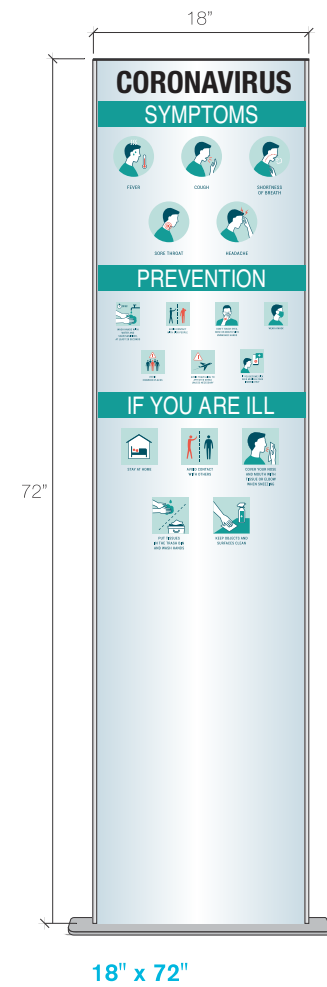


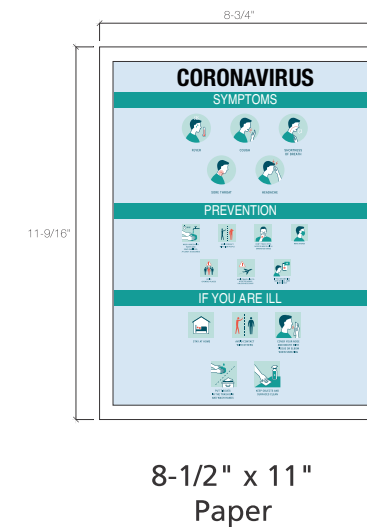
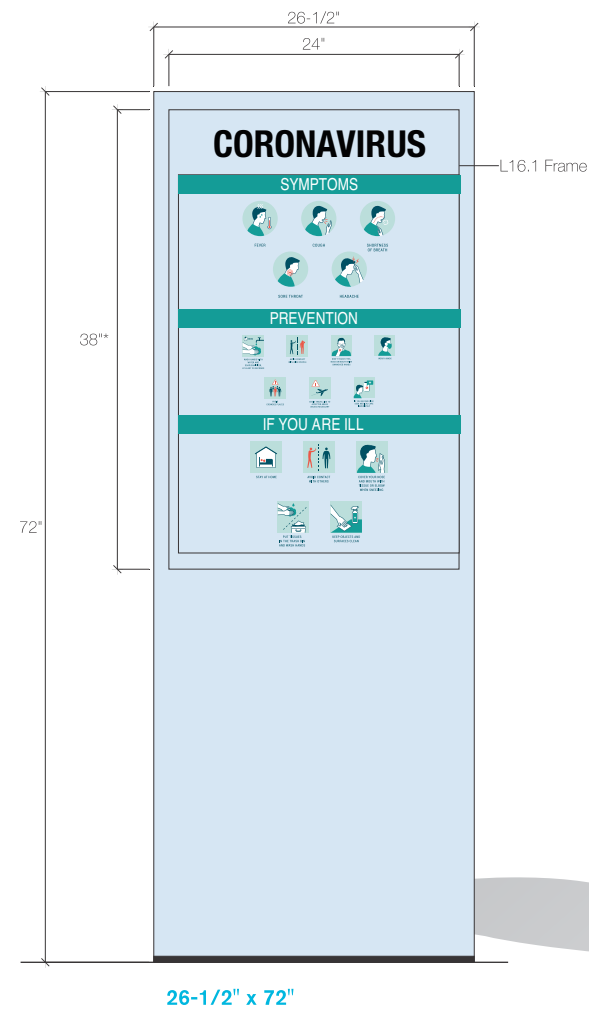
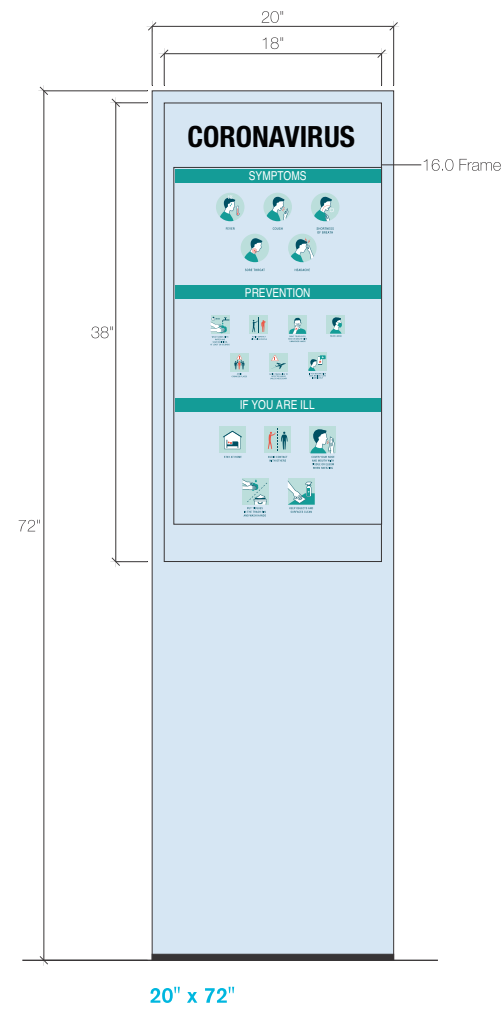
DRY THOROUGHLY

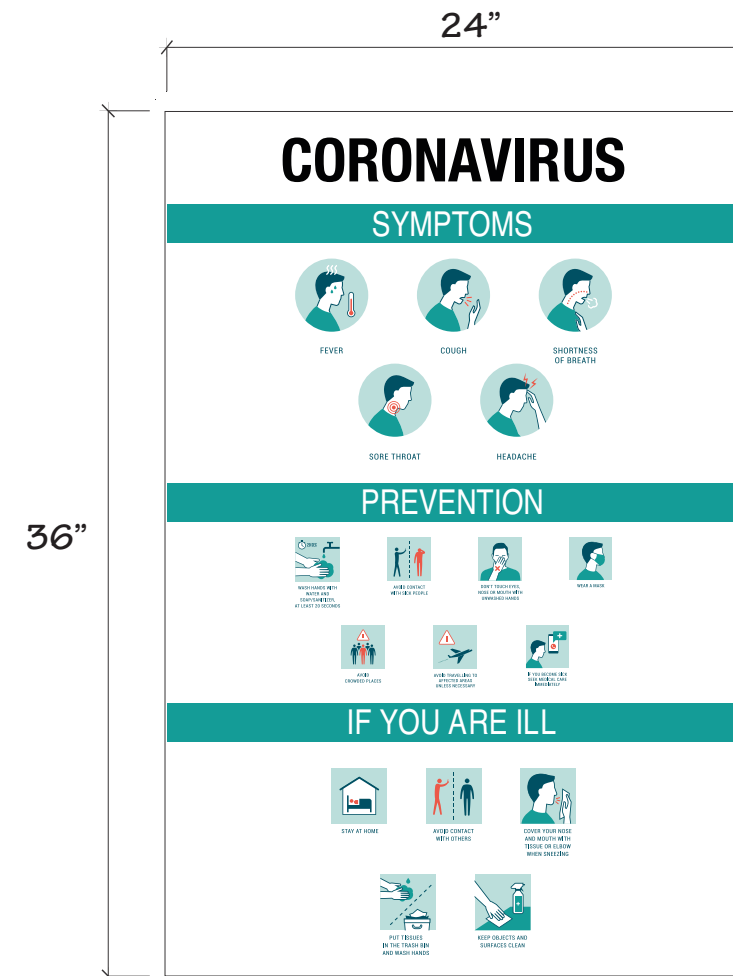
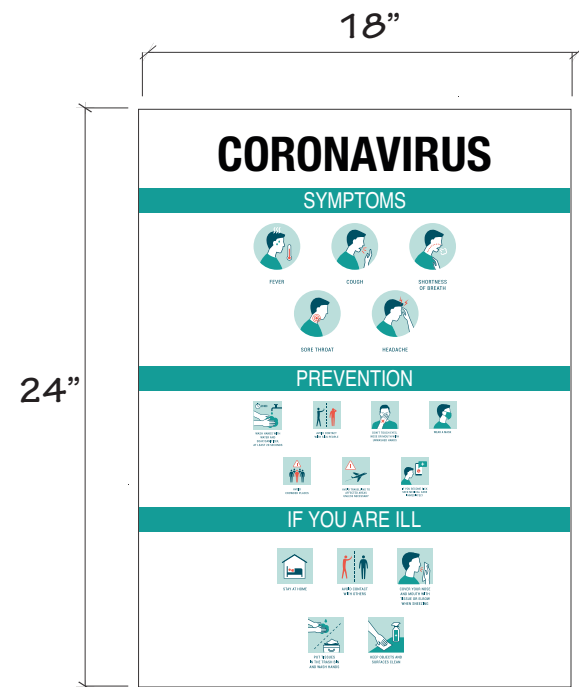


USE TOWEL

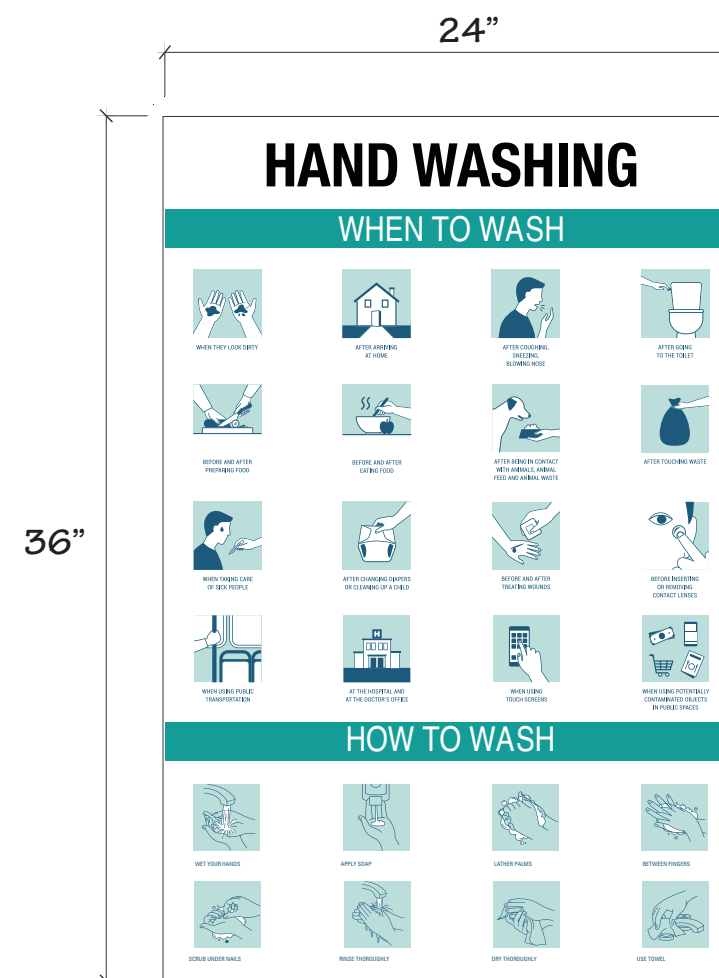
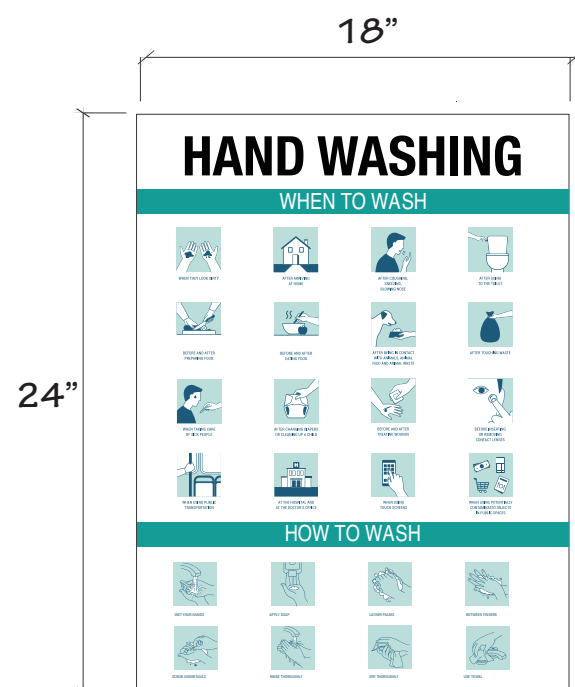








- Digital Print on PVC
- Digital Print on Foamcore



- Digital Print on PVC
- Digital Print on Foamcore